

Feeling At Home

Arkitektskolen Aarhus
September 2021 - January 2022
Nicholas Cooper





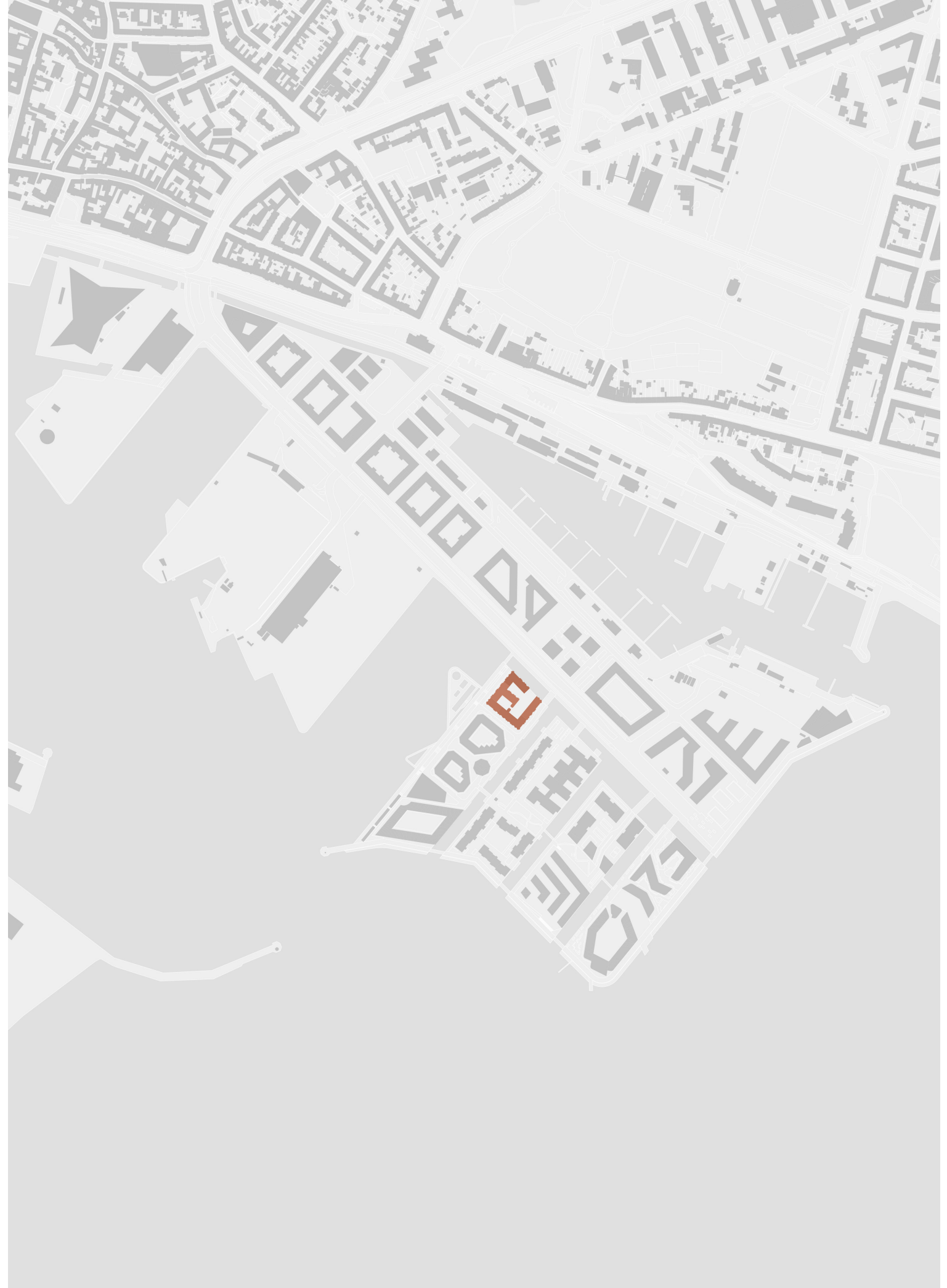
As many of Denmark's sea-fronting cities depart from their industrial past and develop with new economic identities, building new neighbourhoods in derelict industrial harbour areas is very much at the fore-front of their transformation.

These once industrial areas face several major urban, social and political issues with regards to major redevelopment. Particularly the tabula rasa point of departure, where often the character of the area needs to be (re)created from scratch.

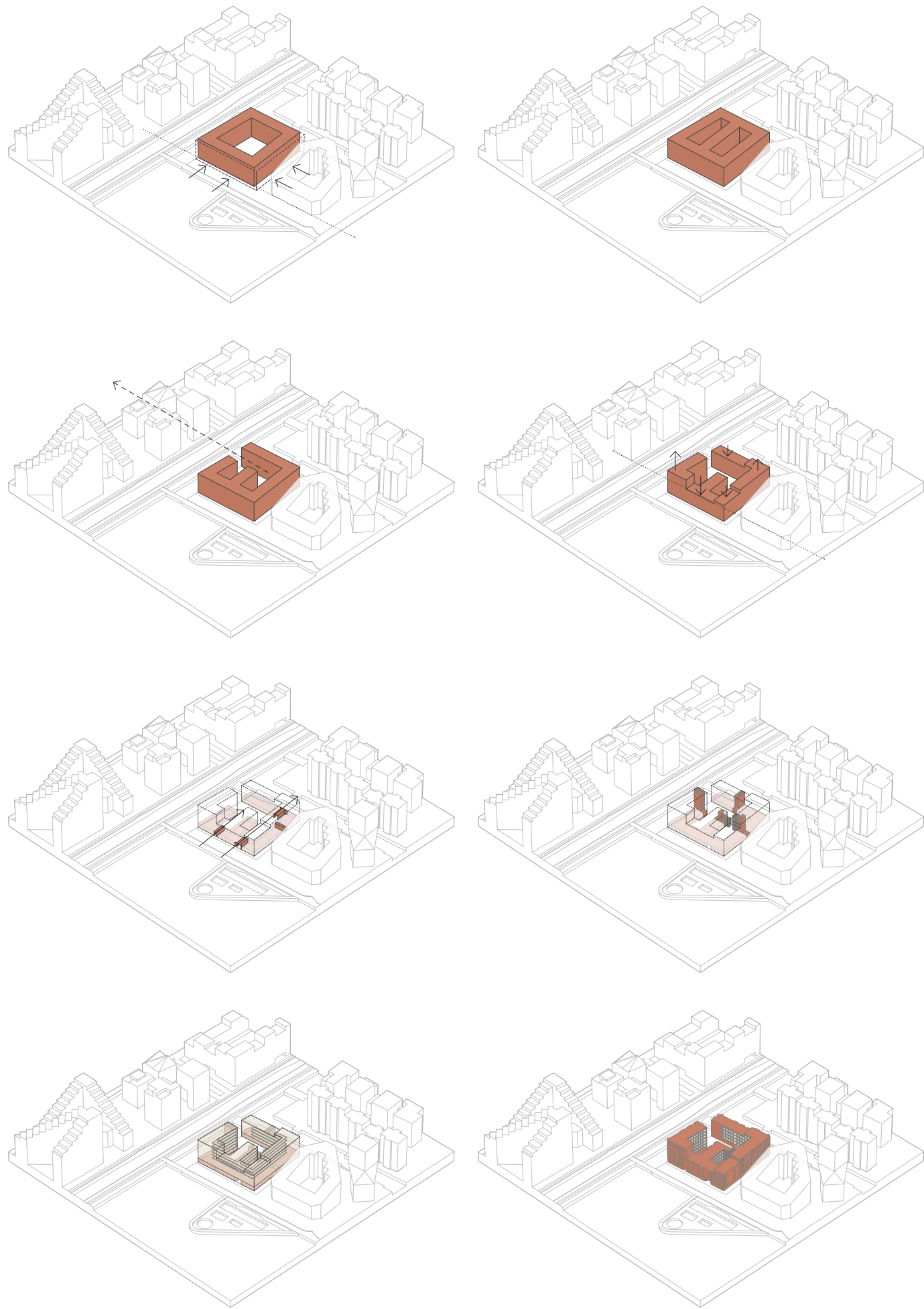
The transformation of these areas often coincides with the city's growth; housing, therefore, often becomes the main functional program for these harbour developments. The proposal intends to offer a potential solution for building large-scale housing in these major industrial redevelopments. How can an architecture mediate between a new piece of the city at a cultural, urban and political level and still offer a good domestic dwelling, a place to feel at home.

The site is located in the block named Bassin 7; adjacent to the Karréerne development by Sleth and includes direct access to a planned canal.

- Number of units: over 80
 - Maximum height of 9 stories
 - The typology of the units is free
 - The program can be arranged in more than one volume
 - The structure should be mainly built out of wood
 - Maximum footprint: limit of the plot
 - Publicly accessible ground floor
- The empty space close to your building is also part of your proposal



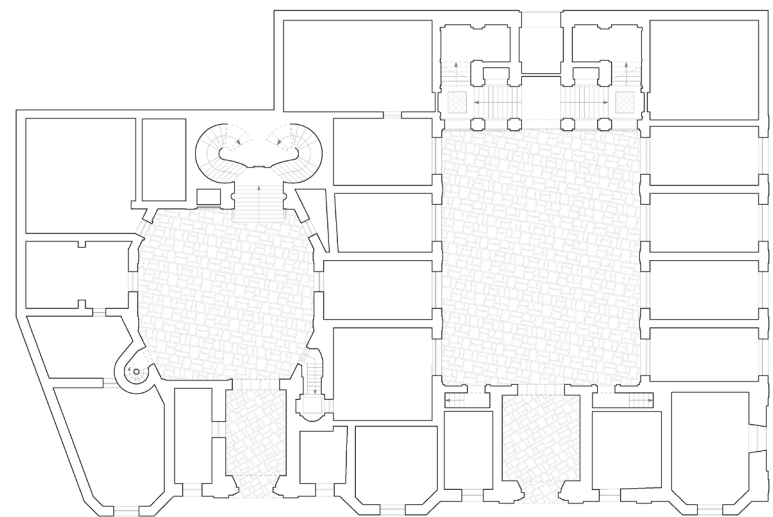




A City Block
 The building aligns to its neighbours in scale and mass, while breaking into a collection of irregular courtyards, taking reference from Palazzo Sanfelice.

Palazzo Sanfelice, Naples

The two adjoining courtyards create a distinctive and dynamic entrance sequence to the Palazzo's upper levels.



Mansion Block Typology, Aarhus

The red-brick mansion blocks define the backbone of the city; Åboulevarden, Skt. Anna Gade and Læssøesgade.

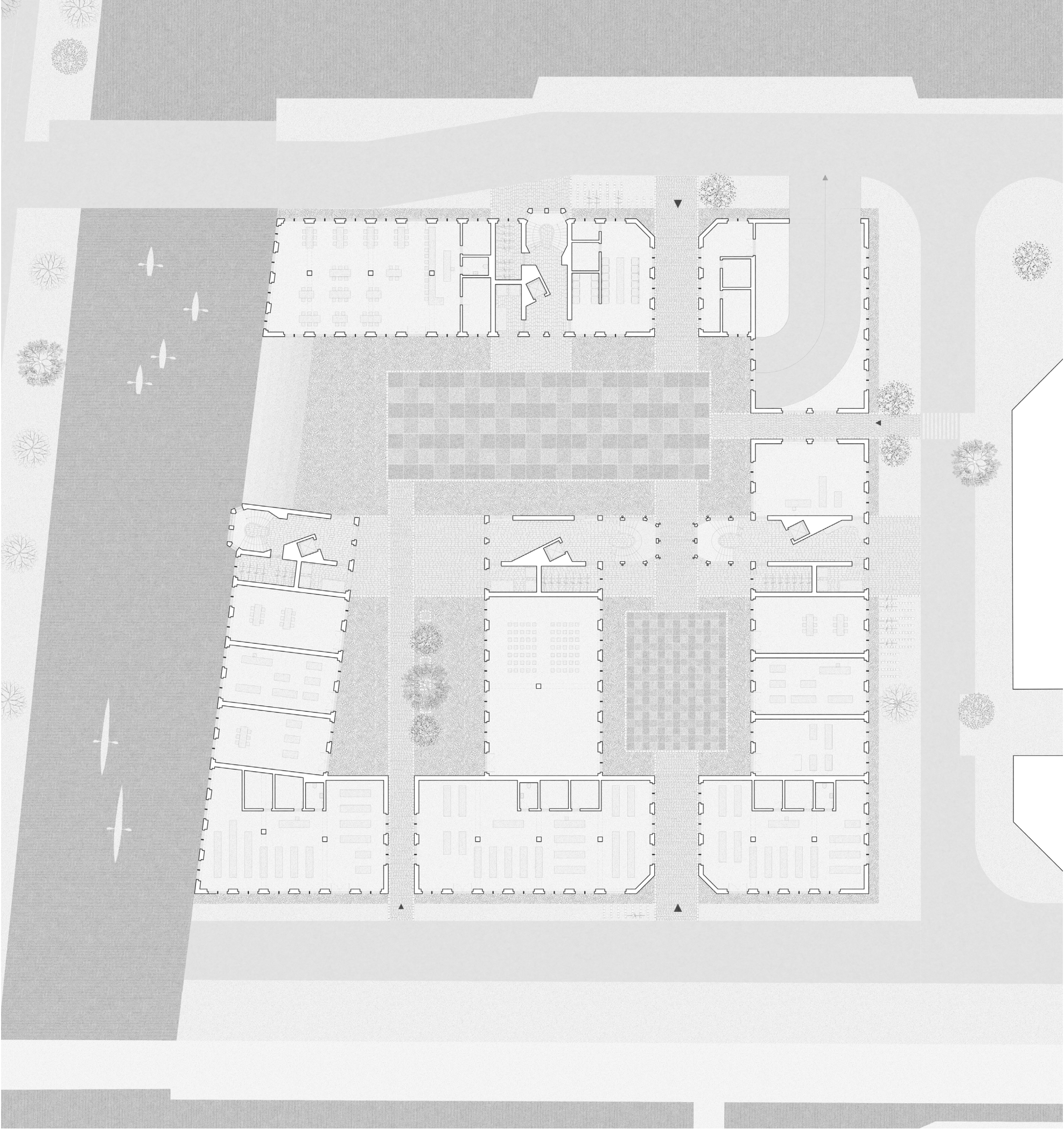
Classensgade, Copenhagen

The majority of the ground is lain with a textural slowing surface, while easy routes for pedestrians and places for localised gathering are addressed with smoother surfaces and large carpet like gathering points for the residents, which also provide a nice view from the kitchen windows.



A Civic Ground

The ground floor of the building is entirely orchestrated towards public and communal functions, while lend a certain sense of dignity to the space is provided through a level and unitary stone surface.



Level 01-03 Floor Plan

Repeated one, two and three bed apartment modules are joined by an internal walkway, broken only by expressed staircase cores, intentionally occupying the centre so that a far wider array of apartments are laid out between the gateway portals and the residents ascent up the staircase cores.



Royal Château de Blois, Blois

The elaborated circulation, while functional in its distribution to the apartments within the building intends to create a distinctive and dynamic entrance sequence.



Level 05 Floor Plan

Repeated one, two and three bed apartment modules are joined by an internal walkway, broken only by expressed staircase cores, intentionally occupying the centre so that a far wider array of apartments are laid out between the gateway portals and the residents ascent up the staircase cores.





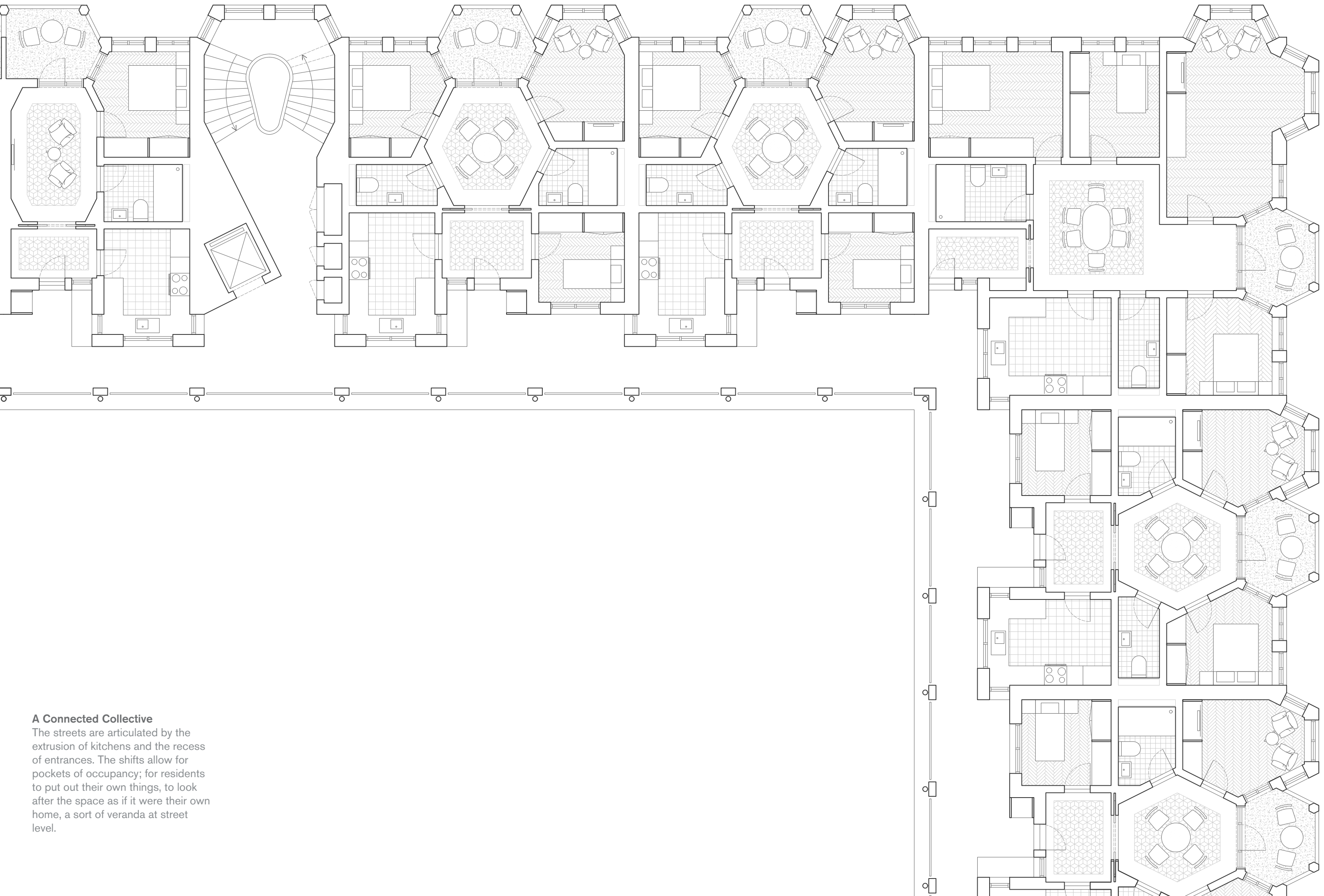
La Vieille Charité, Marseille

The walkways intend to have a certain sense of robustness, a protective layer between the apartments and courtyard below.



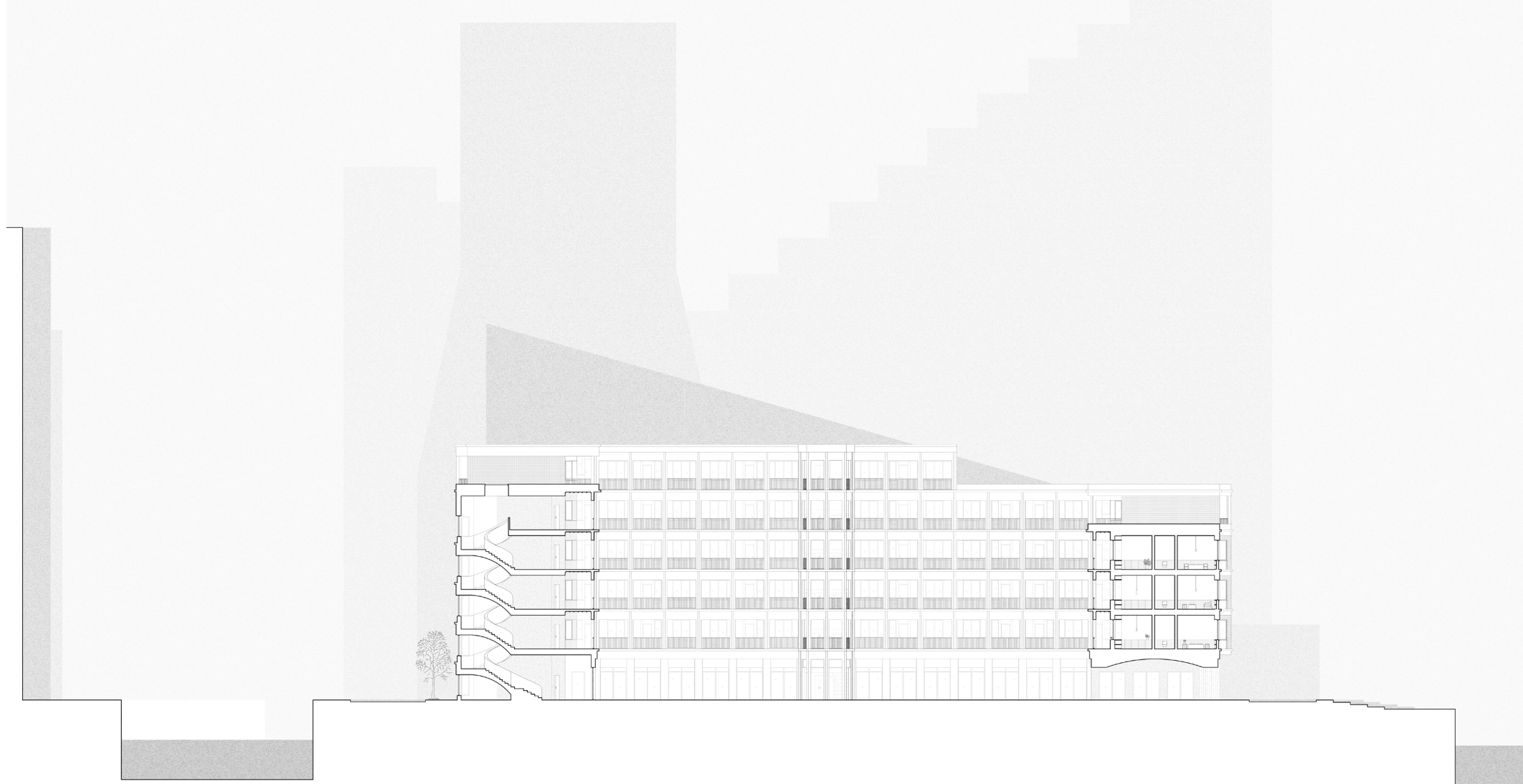
Sunset Over The Shared Walkway

The walkway shares a language with the interiors, appearing almost like the apartments have been turned inside out.

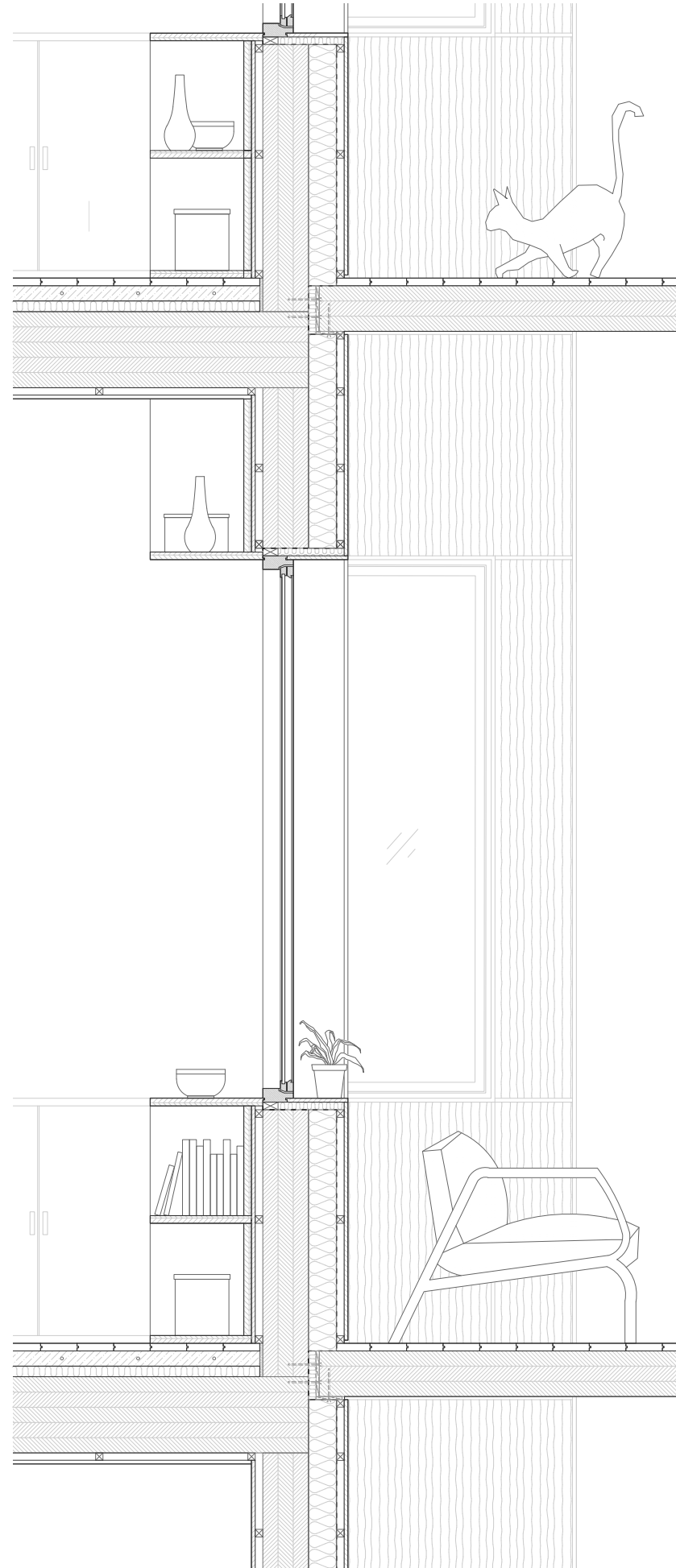


A Connected Collective

The streets are articulated by the extrusion of kitchens and the recess of entrances. The shifts allow for pockets of occupancy; for residents to put out their own things, to look after the space as if it were their own home, a sort of veranda at street level.



Framed Spaces
 The courtyards gesture to the passer-by to venture forwards onto the linear courtyard that opens suddenly and dramatically to the west, enclosing and raming the canal.

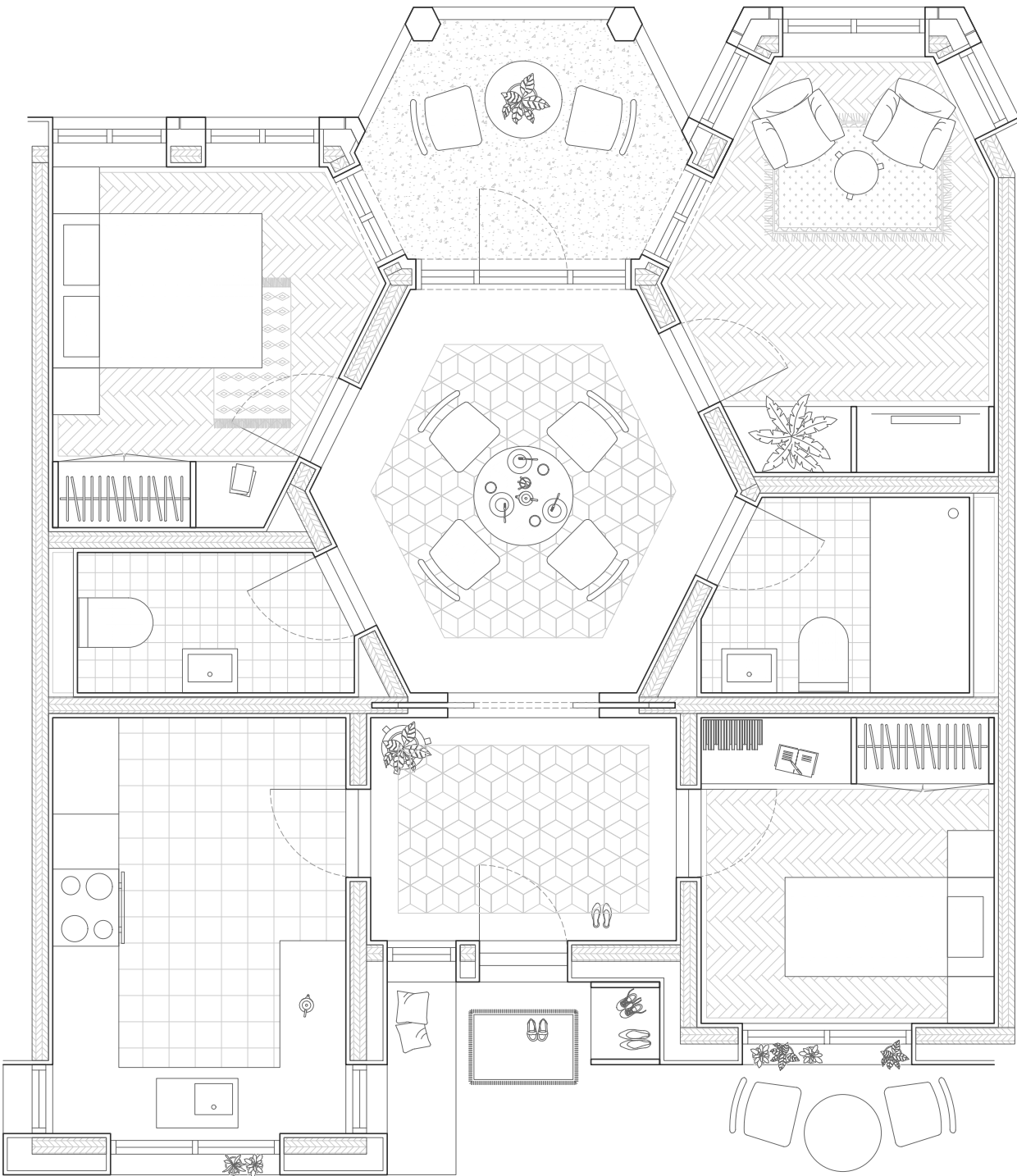


Entrance Niche

The entrance portico intends to act as the first room in the proposal. A space to sit, store shoes and coats; a cupboard-like spatial layer between the interior and exterior.

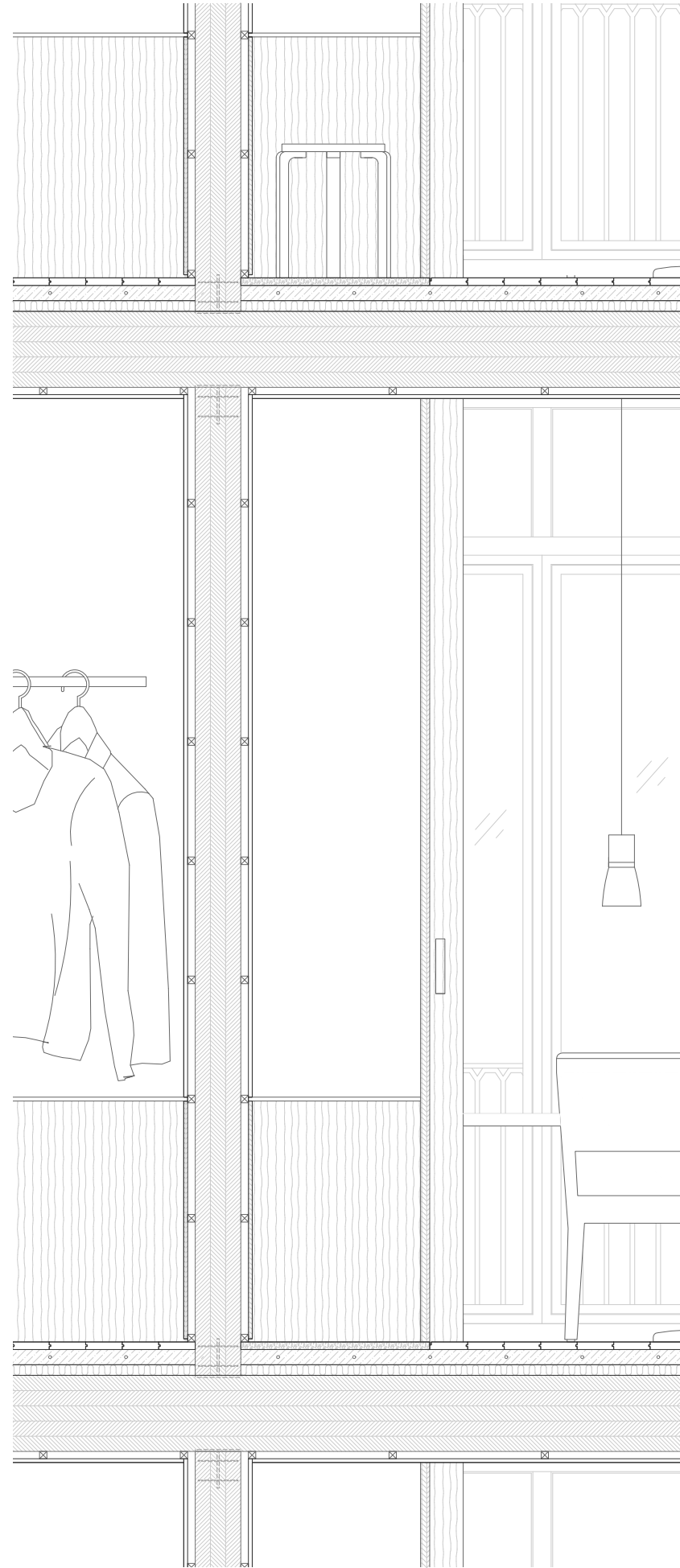


Vilhelm Hammershøi, Open Doors
 The potential of rooms and doors as
 a resistance to typical open plane
 spaces.



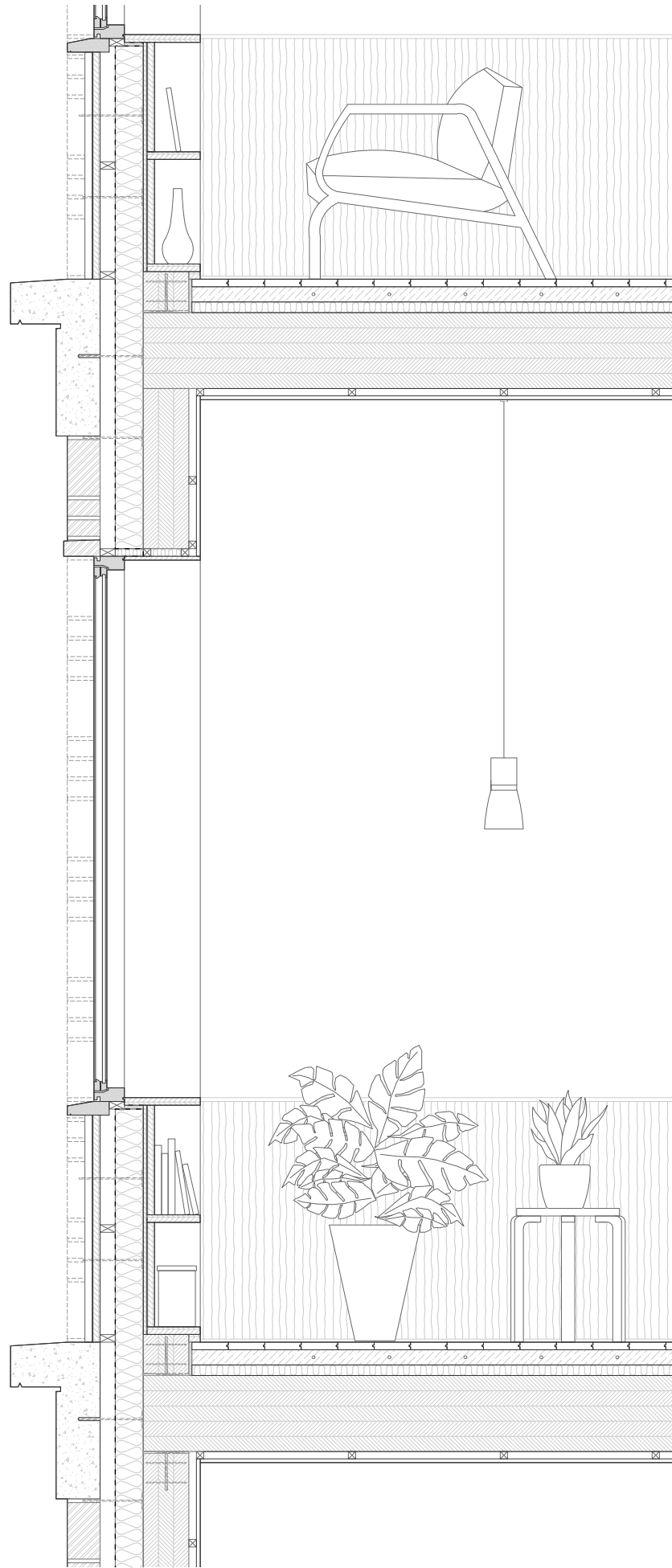
Typical Apartment Plan
 The apartments are defined by a
 series of rooms. The living room and
 kitchen take up opposite sides of the
 apartment and the central axis from
 walkway to balcony is broken by a
 central hexagonal 'antechamber'.





A Sequence of Rooms

Birch plywood and plasterboard form the main material composition as an aesthetic and practical ensemble; protecting the encased CLT allowing for resident alterations, while the plywood adds a sense of robustness and permanence to the interior rooms.



A Domestic Wall

The street façades are characterised by the bay window, a typology that adds both an interior spatial quality and a familiar decorative addition for the street.





**Sunrise Illuminates A Karnap
Lined Street**

The bay windows articulate the street below, flowing towards the harbour beyond.

