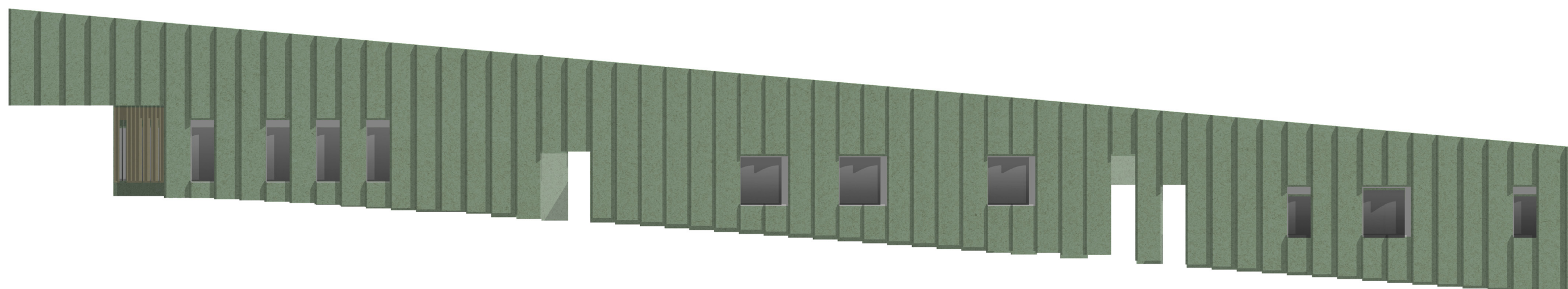


A Place Of Thought

Arkitektskolen Aarhus
February 2021 - June 2021
Nicholas Cooper





A Place Of Thought is an artistic and intellectual retreat for intellects, innovators and creators to stay for shorter or longer periods of time - some only for a day, others for an entire semester.

Considered to be part of the existing Aarhus University Moesgård Campus, but can also be inhabited by people from outside the university, the new institutional building intends to offer a stimulating and inspiring space, where inhabitants can research, rehearse and work within their specific field of expertise in the arts or sciences.

This new institutional building, embedded into the fabric of the outdoor museum forest experience, should contain spaces to sleep, work and meet. And begin to speculate towards an architecture that can communicate within its rural setting and yet still offer an eclectic and inspiring experience for its inhabitants.

The site was chosen within a 700-meter radius from Moesgaard Campus

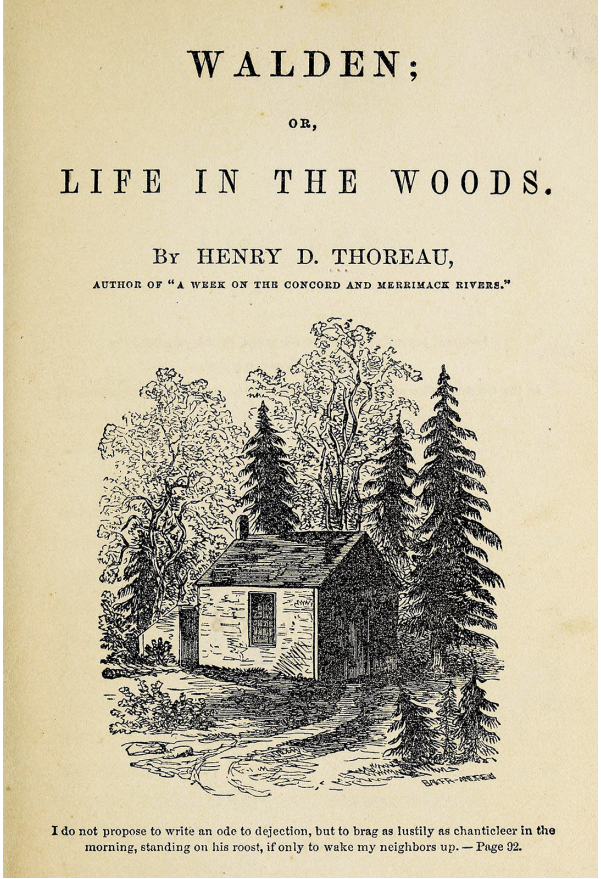
- 12 bedrooms with own bathroom
- Common kitchen, dining room and living room
- Study and meeting rooms
- 2-3 artist studios (for example for crafts and music)
- Auditorium (for 60 people)
- Outdoor areas
- Foyer and circulation spaces
- Laundry room
- Caretaker's rooms with own kitchenette and bathroom
- Storage and technical rooms







A Civic Gesture
 Intended to function as both a strong civic gesture and as the first room in the proposal, the entrance canopy hints at the spatial qualities and interior space beyond the undulating concrete facade.

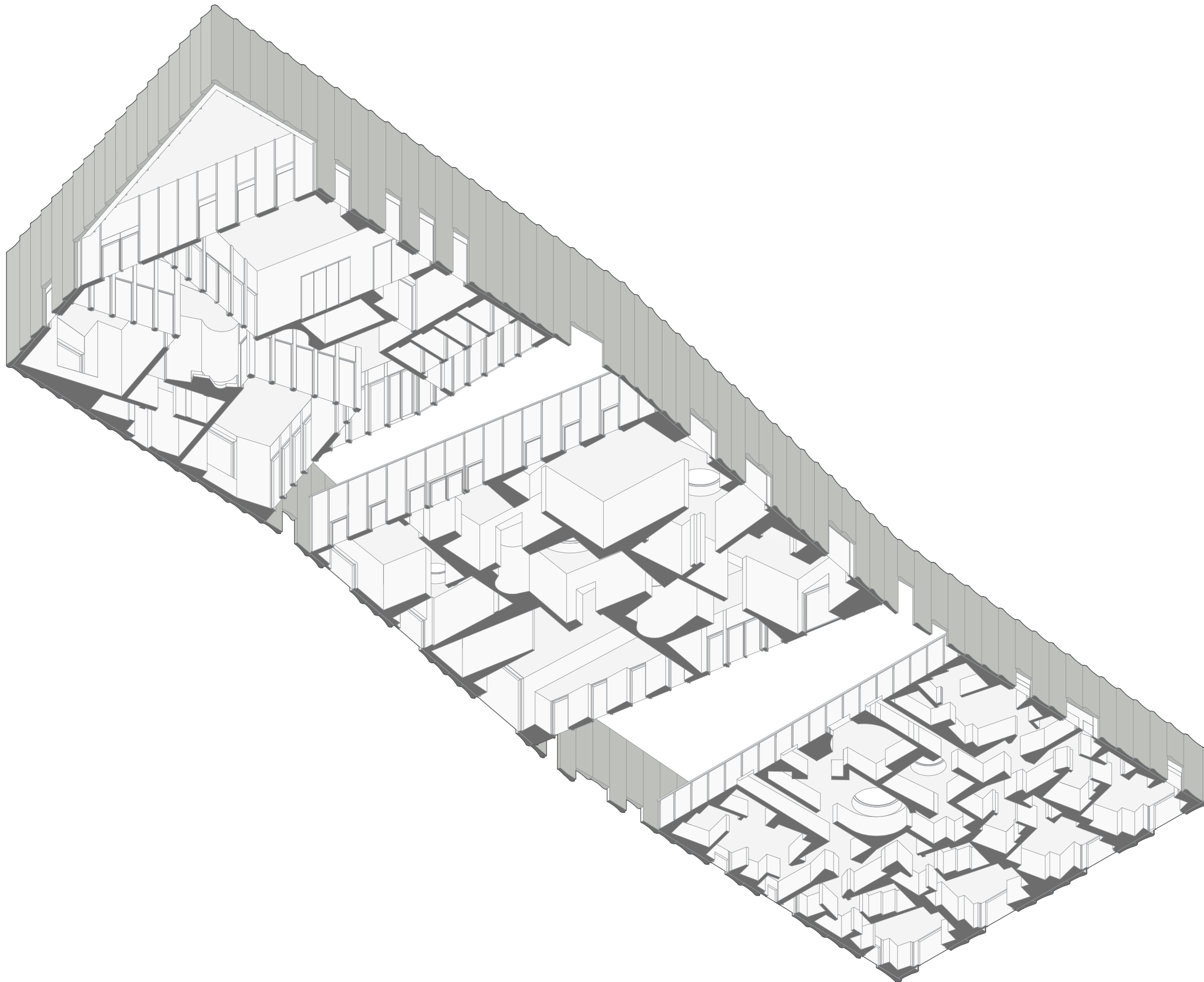


Henry David Thoreau

The spatial organisation of the retreat has been inspired by Henry Thoreau's tripartite chair analogy. In his novel "Walden: Life in the Woods", Thoreau mentions having "three chairs" in his house; "one for solitude, two for company, three for society".

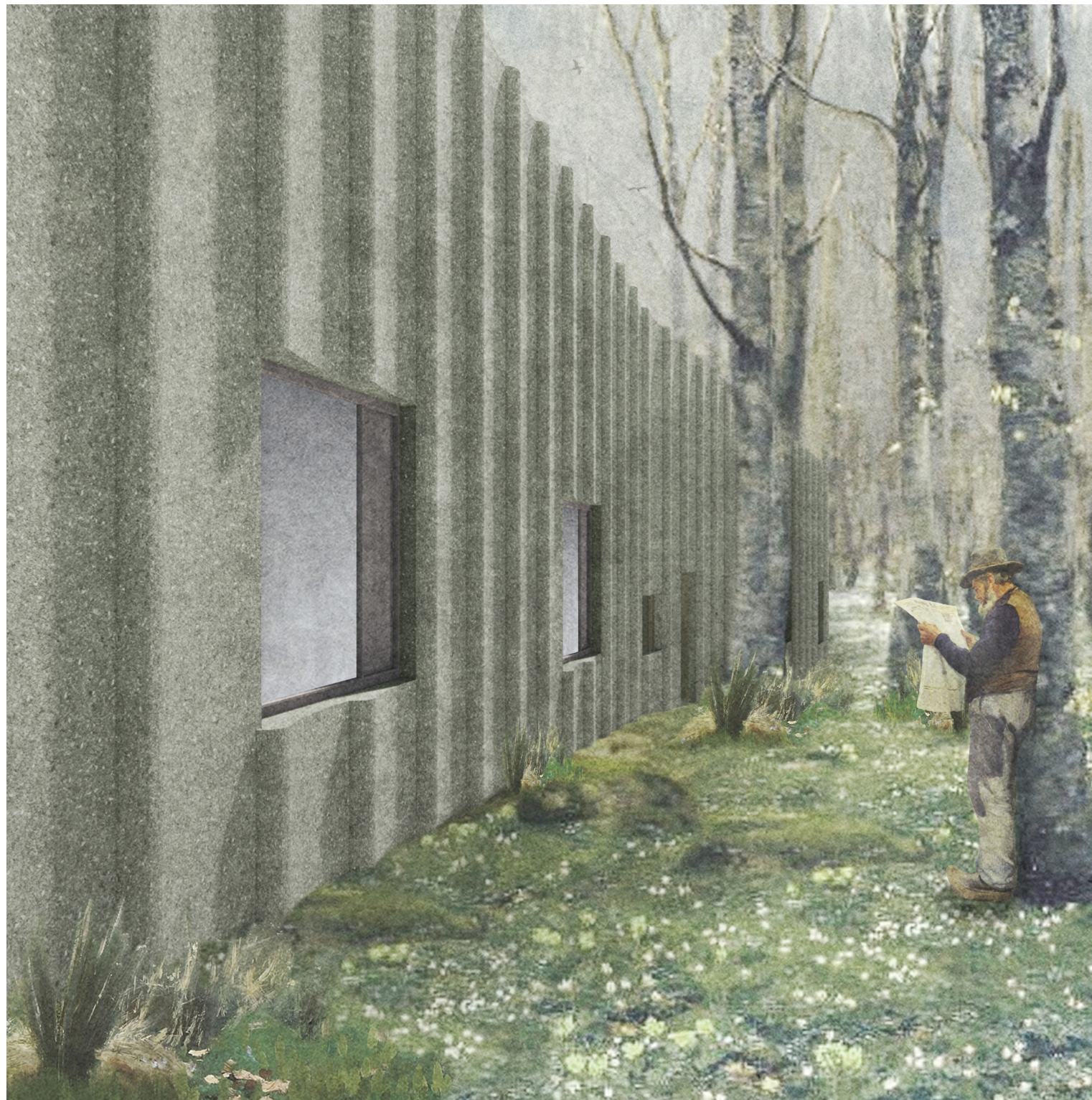


Sunset Over The Shared Walkway
The walkway shares a language with the interiors, appearing almost like the apartments have been turned inside out.



A Tripartite Form

The mass is broken into three distinct blocks, allowing the building to respond to the topographic condition of the site and to the key conceptual framework interpreted from Henry Thoreau's tripartite chair analogy, in his novel 'Walden; Life in The Woods'.



A Wrapped Mass

One metre wide, fluted green pigmented pre-cast panels accentuate the building as singular wrapped mass. These gradually overlapping panels act as a backdrop canvas for the shifting forest shadows.

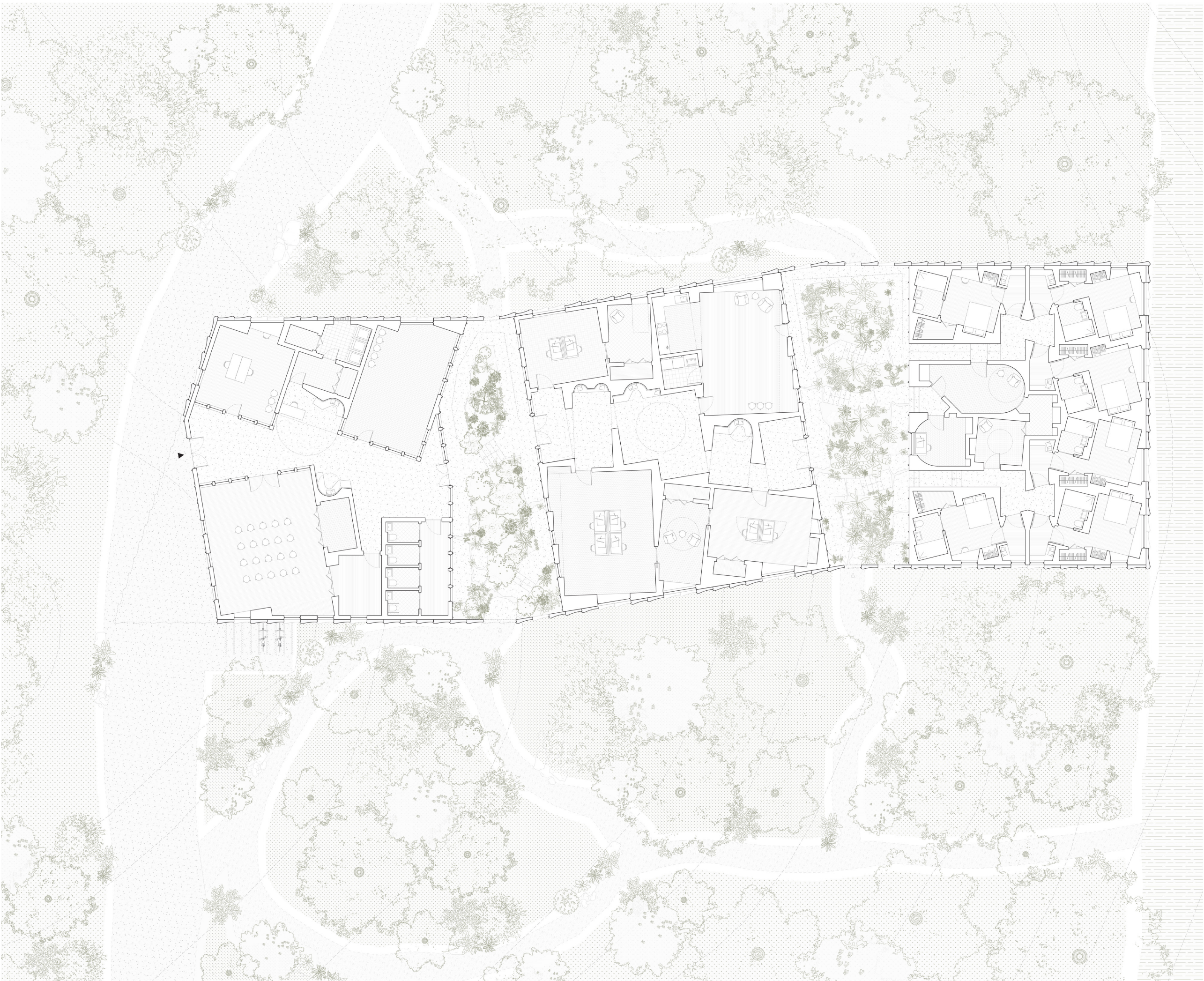


Klostermølle papirfabrik, Skanderborg

The paper mill finds itself nestled amongst the tree canopies

Ground Floor Plan

The building is intended to be an eclectic, charged space, with a wide inventory of stimulating and inspiring interior and exterior spaces. Organised into three distinct blocks, based on both programmatic requirements; privacy, use and size as well as creating a unique sensory and spatial characteristic to each block.





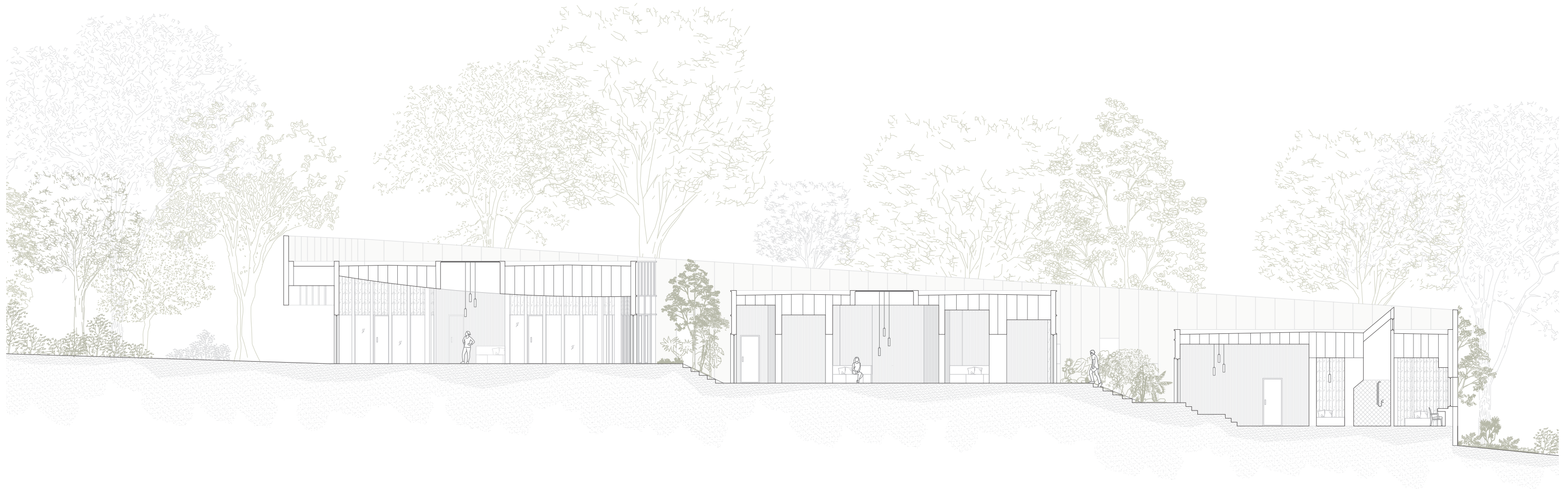
Bank of England, John Soane, 1732

An infinite sequence of interior spaces; rectangular rooms with lantern lights supported by piers and pendentives.



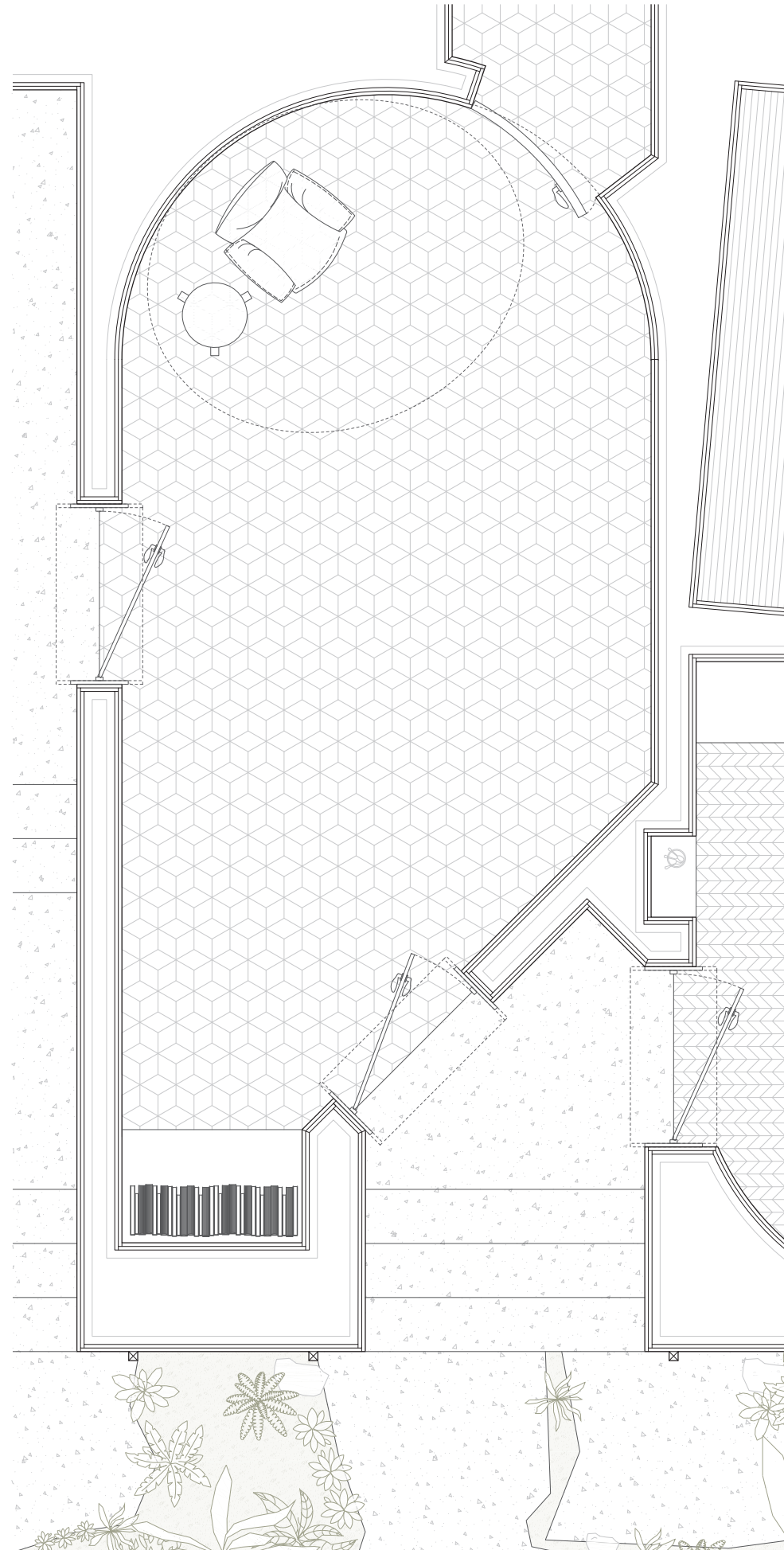
An Interior Street

The volumes intended to create a sense of permeability within the first block Hinting towards the inventory of interior spaces beyond the glazed façades and leading the visitor down the first courtyard.



A Descent to Solitude

The topographic slope of the site creates a gradual decent throughout the building as one goes from the most public to most private part of the proposal. A metaphoric descent towards solitude.

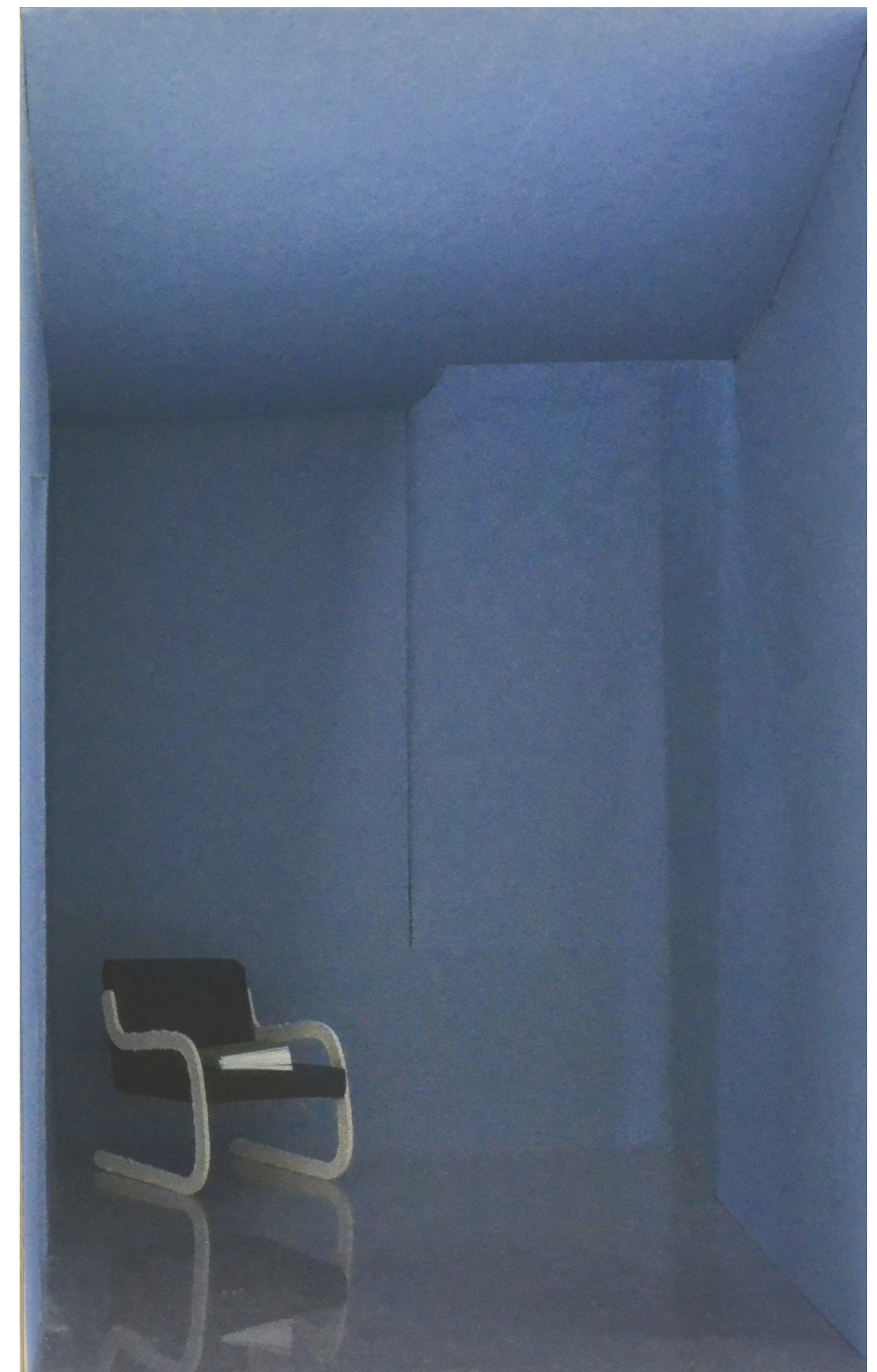


A Room for Solitude
 A single skylight funnels light into the room below, where the curved geometry of the walls, furnishings and thresholds is intentionally expressive and irregular to evoke an awareness of the room.



An Inventory of Interiors

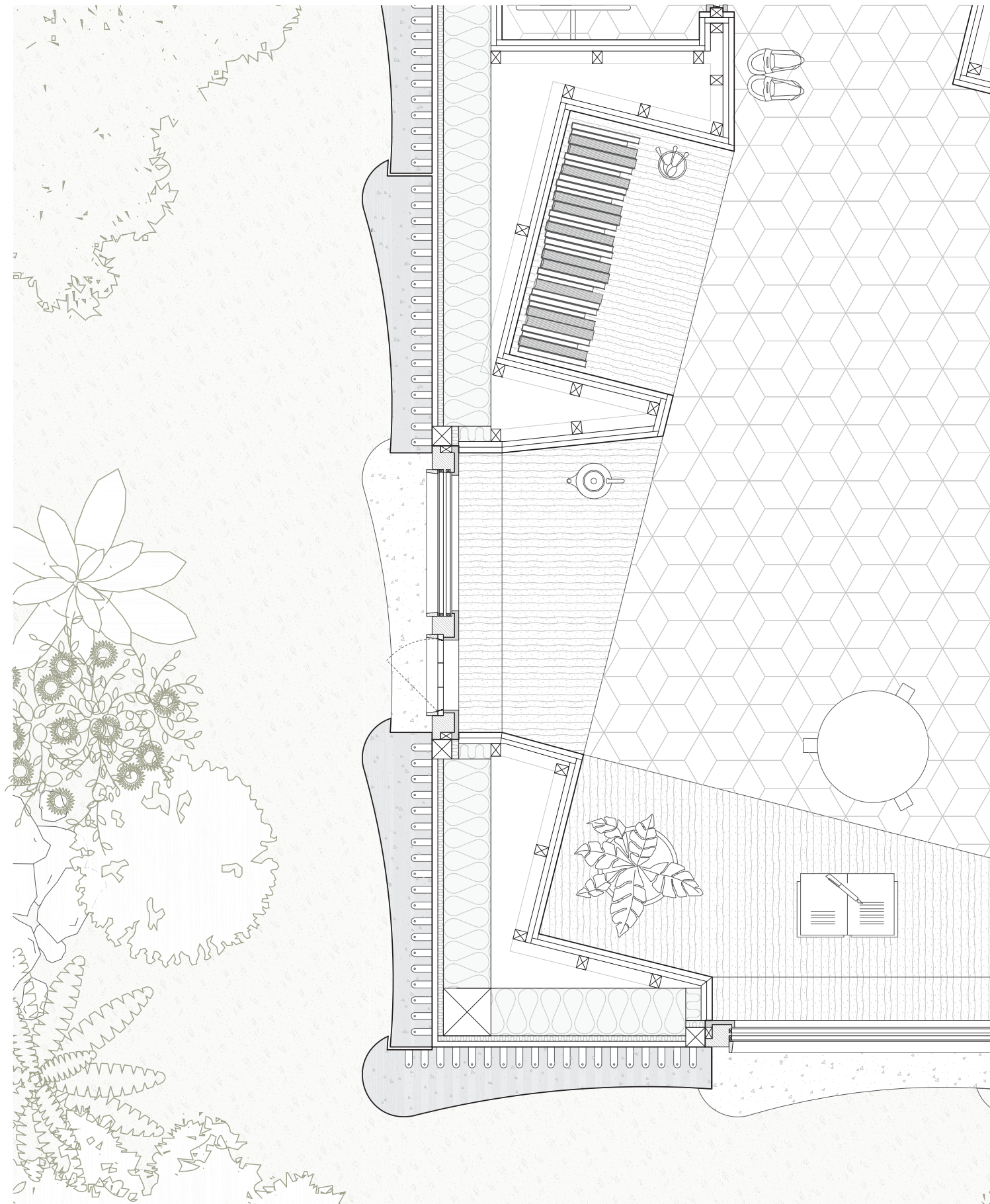
The scheme intends to offer a wide inventory of 'rooms for thought' that have the variety and specificity of found spaces, within a new building. Rather than a defined programmatic use, each of these interior rooms offer a unique spatial and atmospheric quality.





A Wrapped Mass

The ambition for rotated rooms to create hidden spaces, pockets, niches and nooks is achieved through large cavity pockets within the walls. Initially alluding to a thickness and density of wall, but revealing a different sensation when physically engaged.





1:20 Model
Constructed from coloured card,
perspex and plywood