

Dwelling In The Periphery

Arkitektskolen Aarhus
February 2022 - June 2022
Nicholas Cooper





As it becomes progressively more and more difficult to find generous spaces for new dwellings within Danish cities, development increasingly looks towards the suburban periphery to help deal with the demand for housing.

Situated within the lush private villa settlement of Hasseris in Aalborg, the project proposes an alternative way of developing the periphery of an expanding city.

A long standing preservation of this affluent neighbourhood has resulted in a fragmented and complicated suburban development. Pressure has been diverted towards the outer periphery forcing a sprawl into the countryside led by rapid, insensitive development incentives, while heavy restrictions have meant the suburb has been preserved, locked into a museum-like state.

The assignment intends to ask whether the neighbourhood could start to address the city housing shortage while retaining its leafy, green and spacious suburban aesthetic. Attempting to articulate the unique qualities that are derived from the condition of living in a garden suburb with a more compact, diversified and sustainable living pattern.

The conservation agenda has now reached a point of saturation. Grand villas preserved for a lifestyle no longer matched with current living trends has left most with empty bedrooms and deteriorating gardens. Trees are slowly being lost to hardscaping, public greens are converted to parking and yet the neighbourhood clings onto its 19th century garden-village-like atmosphere.

This gradual loss of neighbourhood integrity provides an opportunity to intervene and speculate towards a new suburbia. Allowing a suburban situation of greater density to be speculated more gradual and permeable, but with a clear orientation.

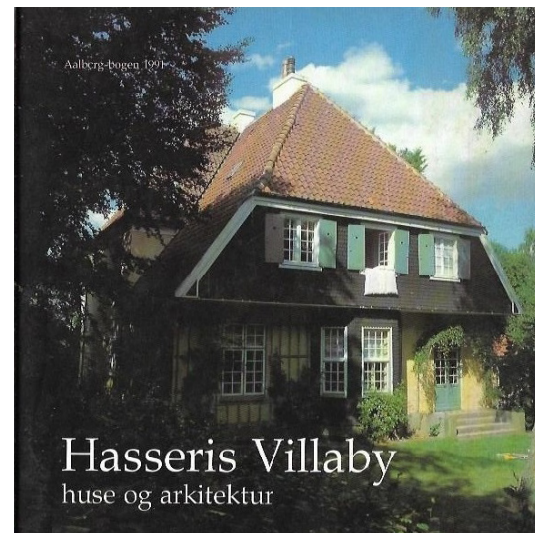
While suburban living is undoubtedly an unsustainable dwelling model and the large detached family home is slowly becoming the least desirable form of accommodation, there is a need to recognise that this suburb, in fact, does hold qualities that are worth preserving; we don't once again have to start from scratch by establishing a mental and physical tabula rasa.

A vision for the future of Hasseris Villaby is proposed, tapping into the capitalist suburban model of private ownership and offering residents the opportunity, not just for the preservation of their neighbourhoods qualities, but a chance to unlock the equity of their unused space and make a financial gain.





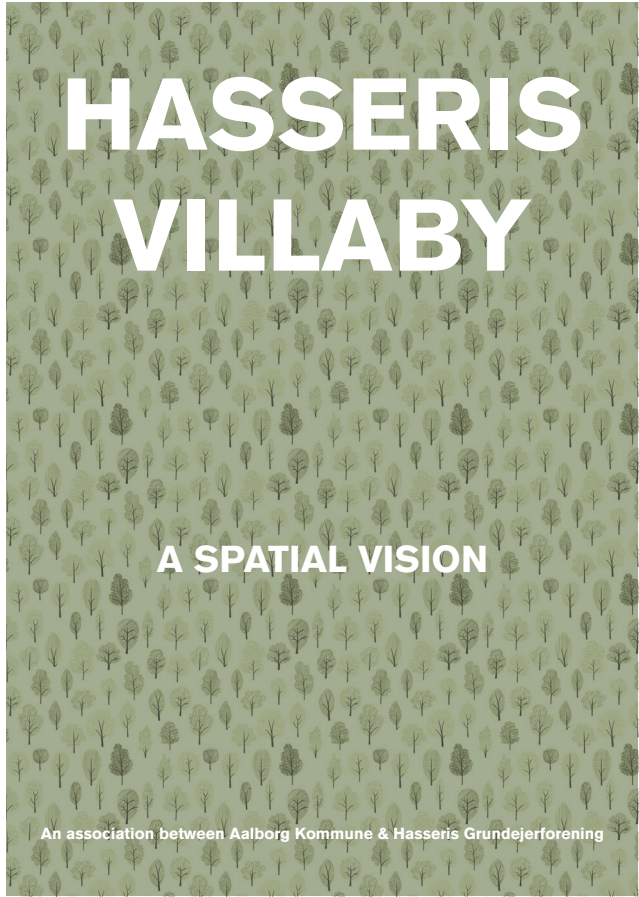
Velkommen til
Hasseris Villaby



Hasseris Villaby, Huse og Arkitektur
Preserving the suburban aesthetic

Hasseris Villaby Discursive Image

The hill at Hasserisbakken became the place of emigration for the affluent middle-class, who began to move their residence out the growing industrial city into this area. Escaping the westerly wind, blowing sewers and smog in their direction and seeking the fjord views of the tax free zone.



A Spatial Vision
The spatial vision has been carefully orchestrated with a soft narrative and digestible graphic style to convince the residents of Hasseris Villaby of the potential benefits of densification.

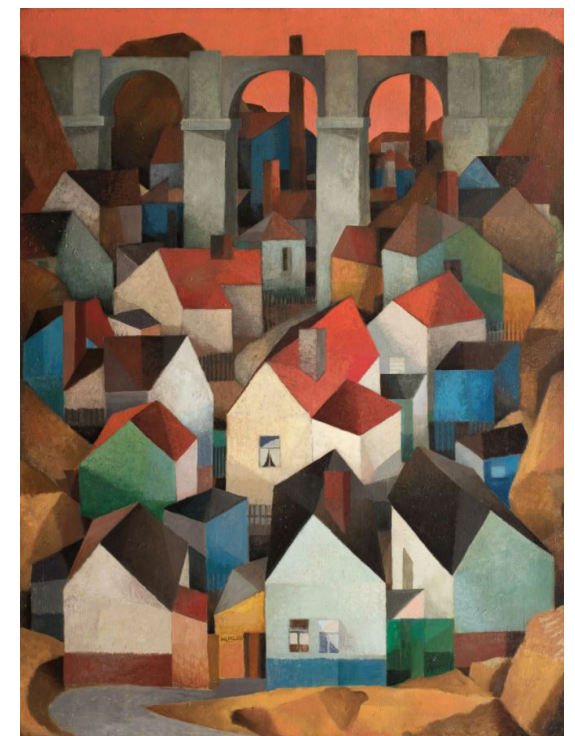
Villas In The Garden
Focusing on the potential of the 'Build' scenario, outlined in the spatial vision; four new multi-dwelling-villas are speculated in simplified and abstracted forms, with one of the villa plots explored in extensive detail.





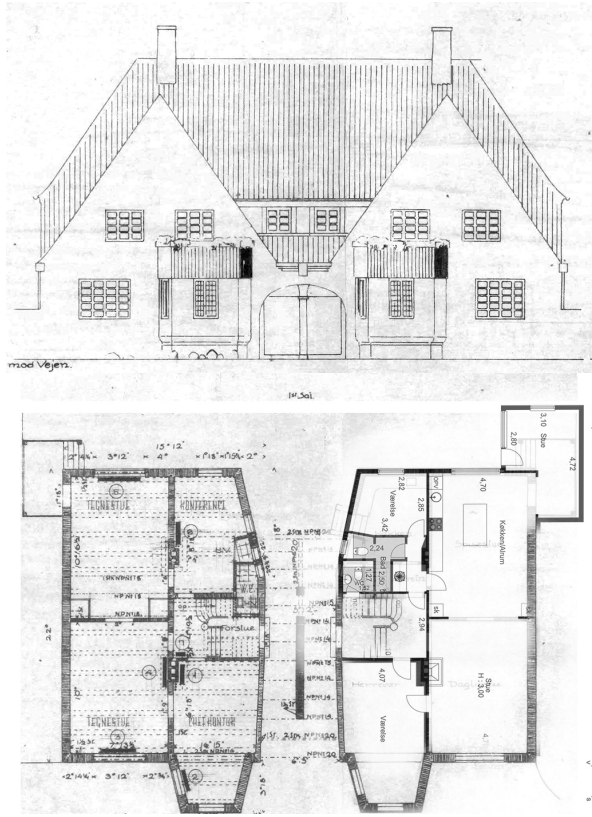
1:200 Site Model

Suggestive villa volumes with Klostermarken 39, the villa explored in detail.



Hlubocepy by Vlastimil Beneš, 1962

Vlastimil's depiction of the town Hlubocepy exaggerates and extends the language of every house - the inspiration for the new villa forms.



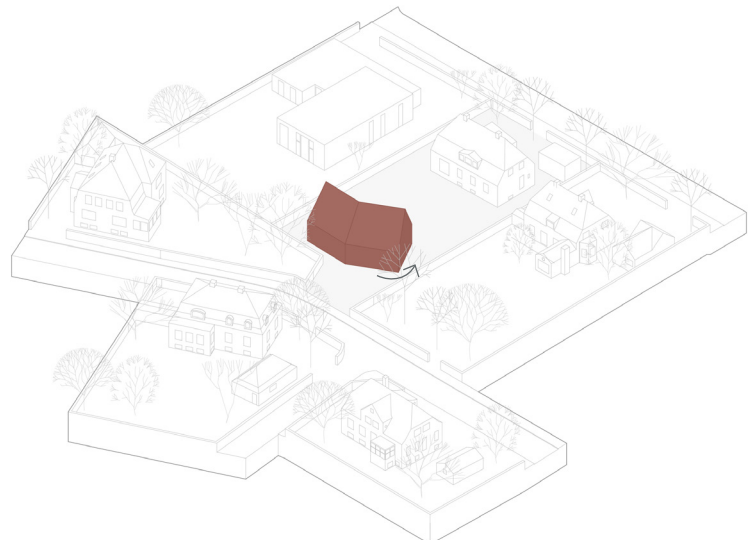
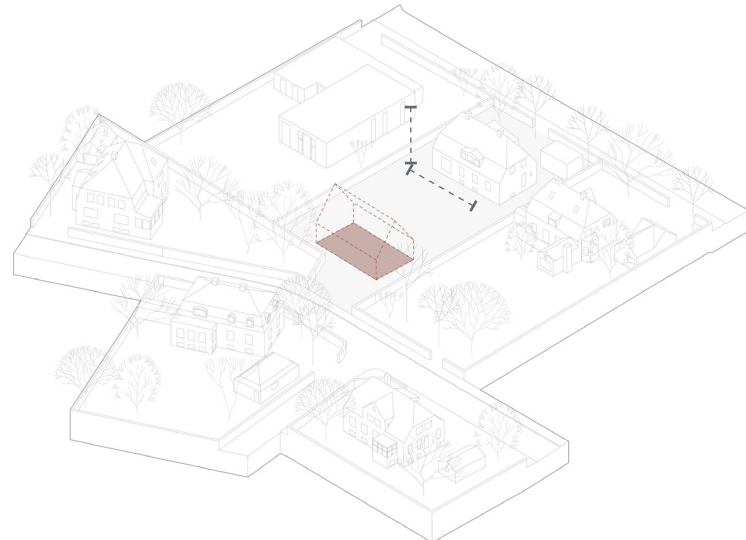
Anton Rosen, Gerthasminde

The proposal is inspired by Anton Rosens double expressed villa. Is it a villa split in half? or is it two glued together?

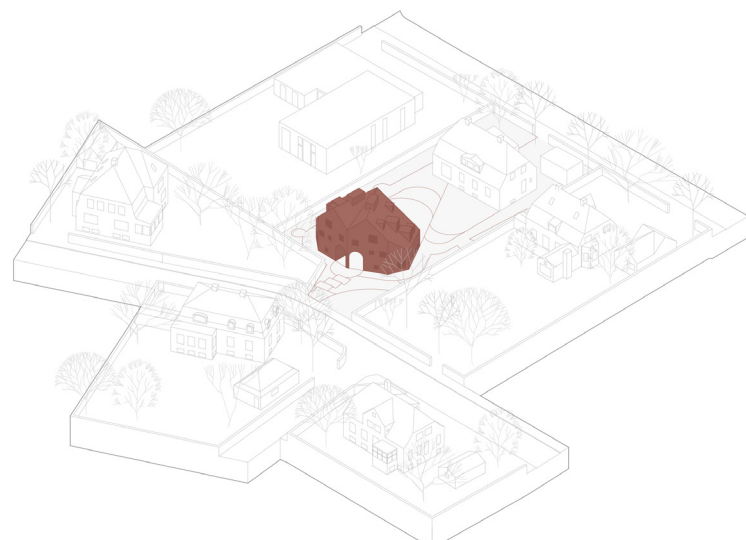
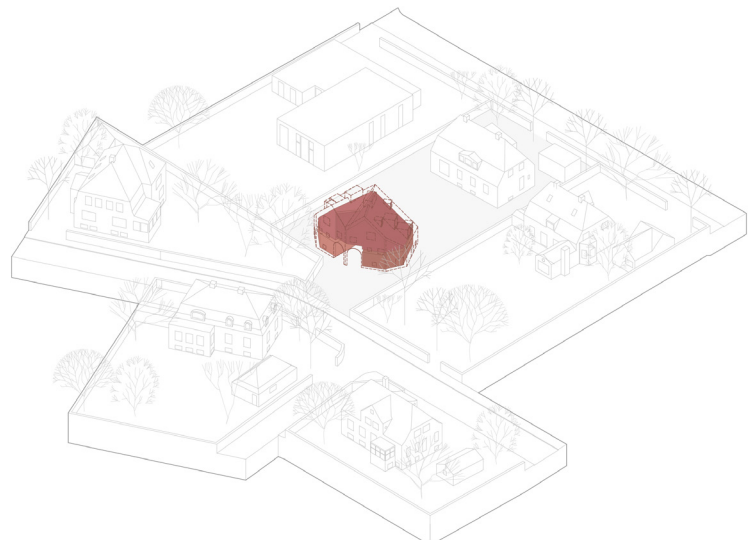
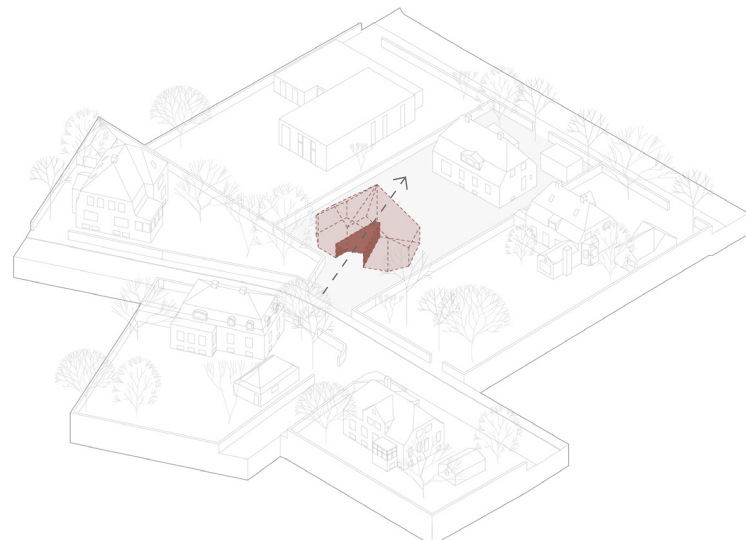
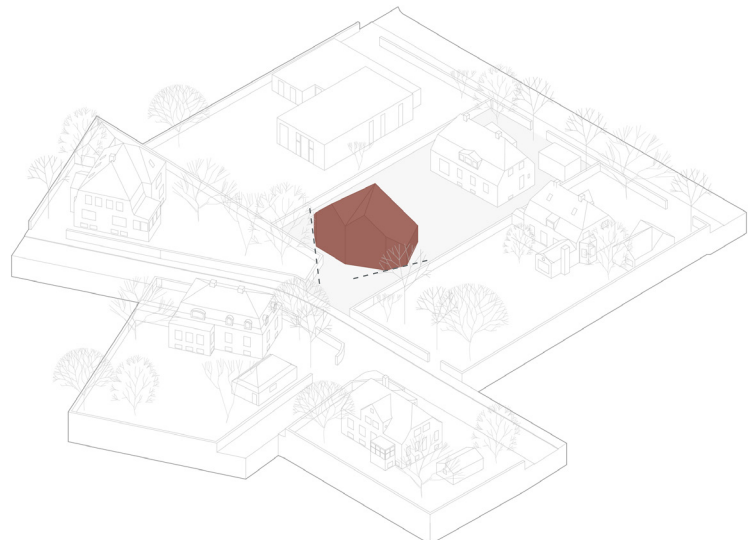
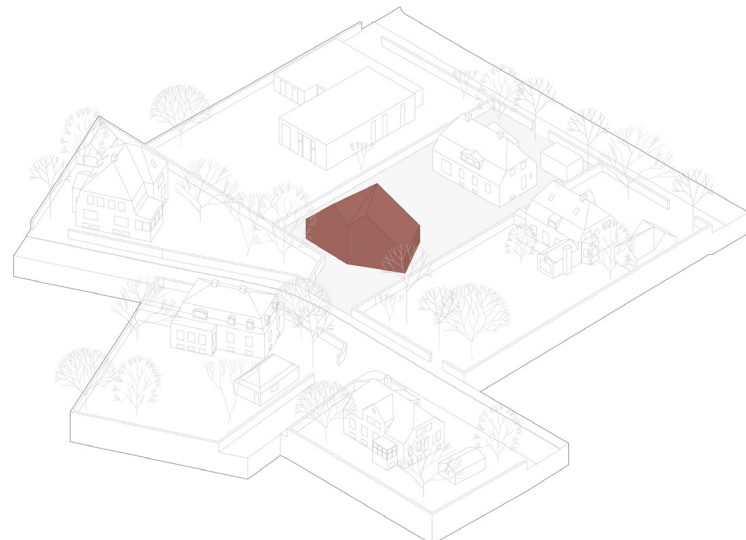


Houses In The Garden

The new villa finds itself nestled amongst the tree canopies, as a familiar yet ambiguous form



Form Development
Key moves in the development of the building footprint, form and architectonic approach.



1:200 Massing Iterations
Development of the Villa form and scale, chronologically placed from back to front.





The Shared First Room

The portiek becomes the first room in the villa, a generous space for residents to put out their own things, to look after the space as if it were their own home.

Portiekwoning, Den Haag
The portiek becomes the first room in the villa, a spatial layer between the interior and exterior.



Palazzo Capuano
The imposing, dramatic and theatrical staircase is entirely functional in its distribution to the apartments.



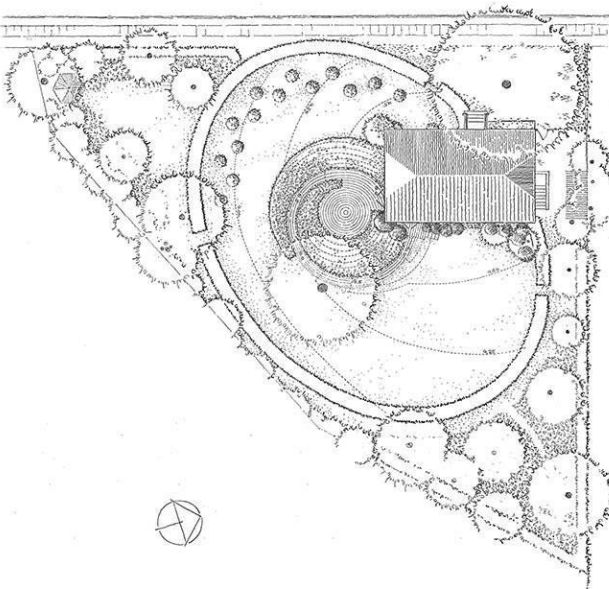
Hasserisvej 145 & Rafns Alle 7, 2009 -2022
 The lavish villa gardens has often become more of a burden to residents, requiring constant maintenance. lawns and paved driveways replace these once green paradises.

The House & The Garden
 The subdivision of the private garden establishes the potential for an aesthetic and biodiversity return; brought back to its intended glory through a shared ownership.



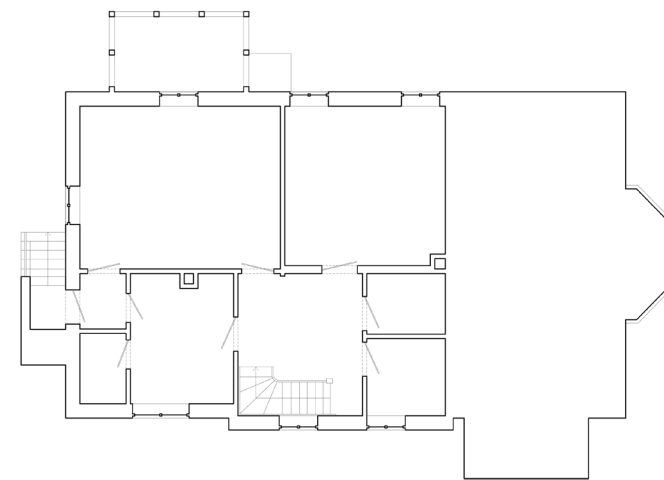
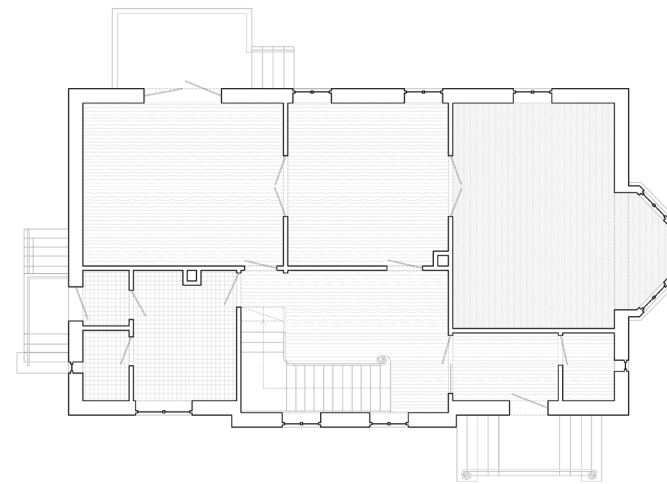
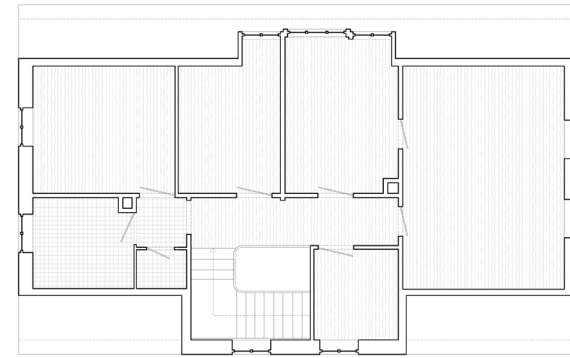
**C.T.H Sørensen, Villa Garden,
Nordsjælland**

Learning from Søresnsens villa plans,
the use of geometric forms and
carefully considered planting



**A Private Space In A Shared
Garden**

Small pockets are carved out from
the wild grass to allow moments of
privacy within the shared garden.



Learning From The Existing
 1:33 interior model and drawings
 explore the pragmatic and spatial
 conditions of the existing villa homes,
 seeking qualities to be interpreted,
 extended or neglected.



Room to Room to Room
The 3 large living rooms interlink;
spisestue, herrevær and dagligstue.
The potential of the room and
connection between rooms.



Reflections by Carl Holsøe
Domestic delight - recognising the
everyday qualities; the connection
between rooms and the connection
between room and garden.





Ground Floor Plan

Two 80 sqm ground floor apartments and two larger 100 and 120 sqm maisonettes on the upper floors occupy the full extent of the mass. Following the idea of sufficiency, the apartments are deliberately kept small.



A View To The Garden

Stucco detailing found on the skirting boards and capitals of the existing villas is playfully reinterpreted as an aesthetic element applied to the plywood joinery. Further emphasising the texture and depth of the joinery and alluding to a more furniture like appearance.



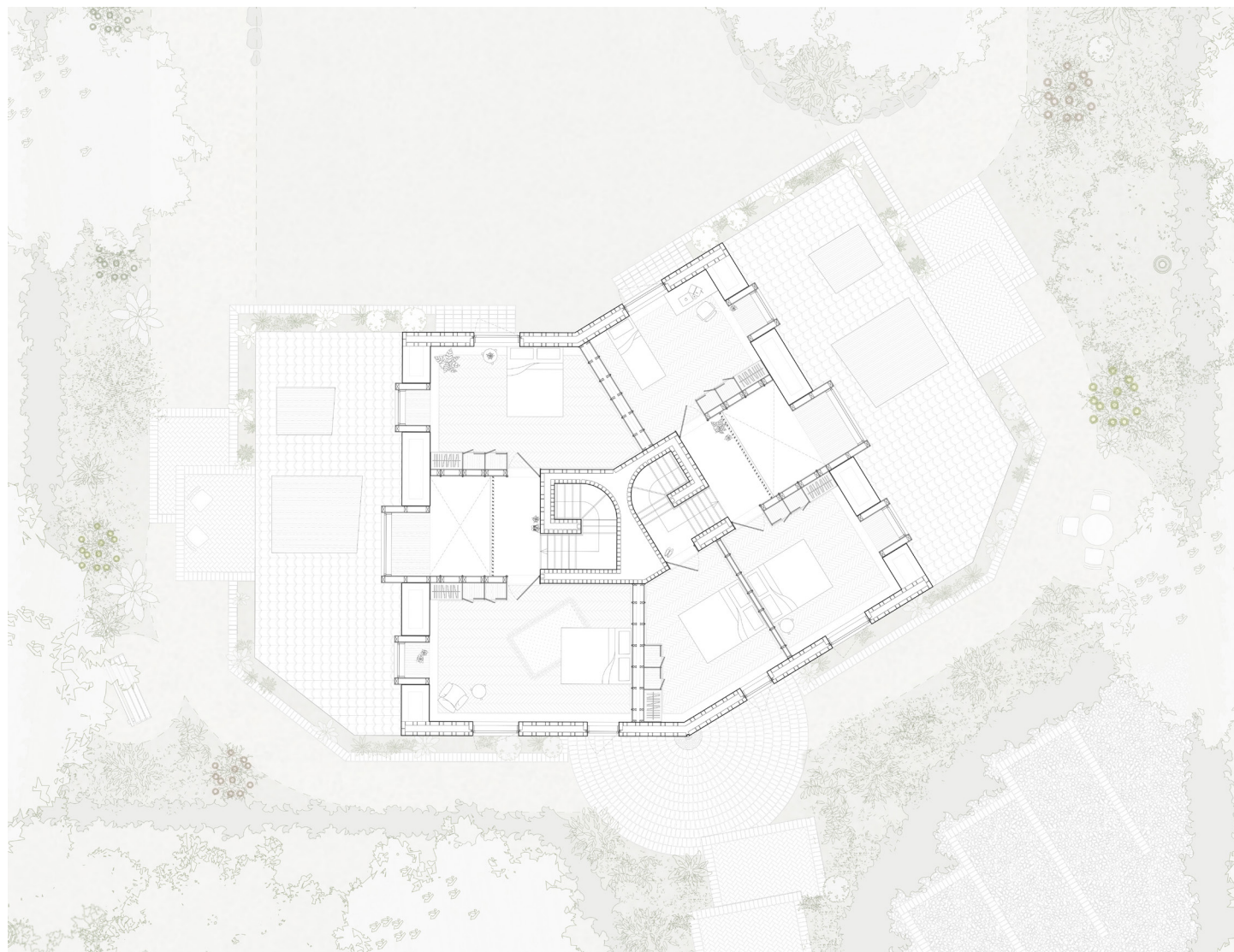
A View To The Garden

Three integrated doors allow the ground floor rooms to separate or unite, opening up a lineal view through the house to the garden beyond.



1:20 Superfurniture

The Interior walls are perceived as intricate pieces of joinery, a super furniture. The cupboard like element accommodates functionality while freeing up the spaces around it to be more adaptable.



Living In The Roof
 Numerous dormer windows puncture the rooms at various heights opening up glimpses to the neighbouring tree canopies.

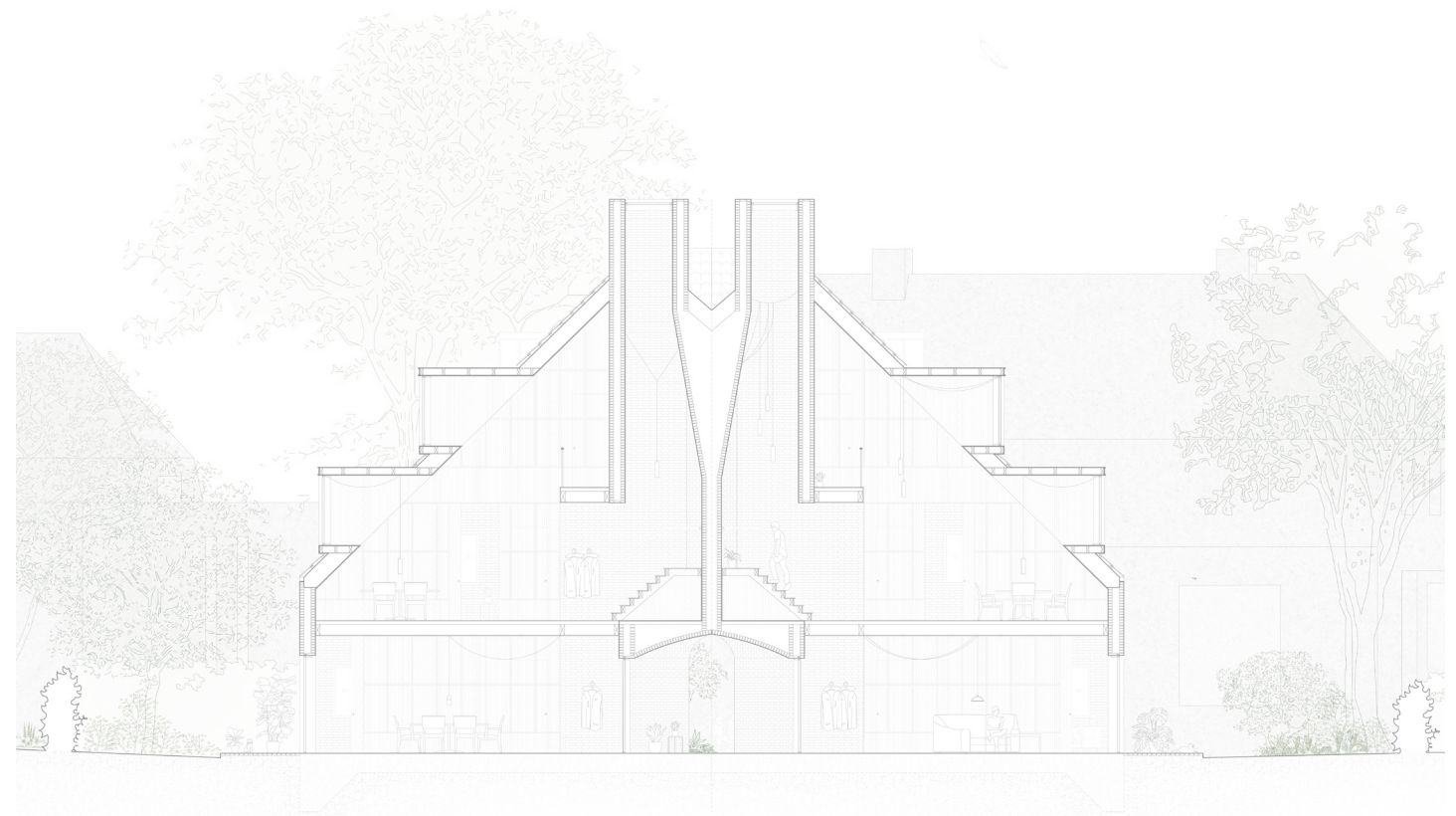
Upper Floor Plans
 The upper floor maisonettes mimic the ground floor apartment layout, while the top floor makes use of the double height entrance space to allow for a half level within the staircase.



A Strange Familiar

The villa is adorned with many familiar domestic features such as dormer windows, pitched roofs and chimneys that find themselves reinterpreted and extended in the building. An emphasis was placed on the aesthetic composition of the building and the importance of its beauty; finding its place alongside the existing villas.



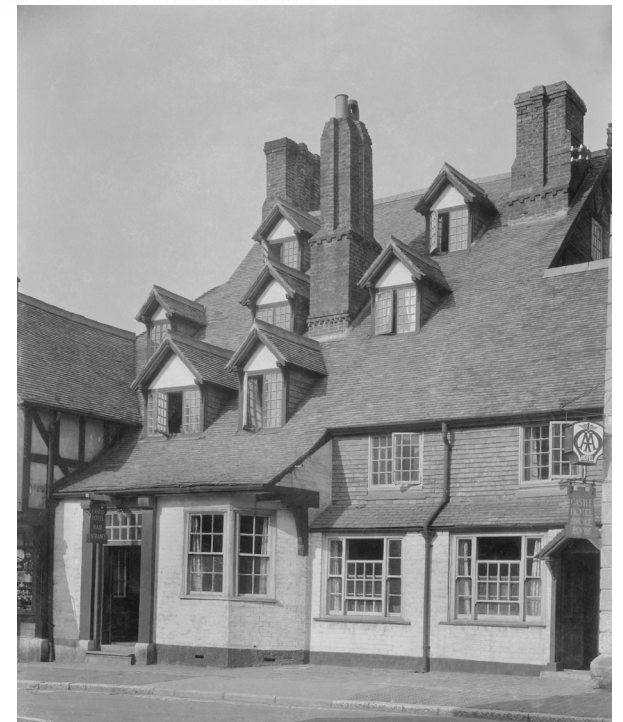


Section Short

The connection to the garden is emphasised in section, with all rooms drawing attention outwards so that the building almost appears as if it is floating, anchored only by the staircase core

Living In The Roof

1:50 model exploring the potential of the roof; escaping from the apologetic velux roof lights that adorn the existing villas.



Myddleton Arms, Ruthin

The full extent of the roof being inhabited, defined by the loosely punctured dormer windows.

Velkommen til

Hasseris Villaby^{2.0}



Towards A New Suburbia

The proposed villa intends to inspire future development, setting a standard for the neighbourhood to follow as villa owners slowly seek to unlock the equity in their unused space.

Towards A New Suburbia

The envisioned condition of Hasseris Villaby once the Spatial Vision has been unlocked too its full potential.



